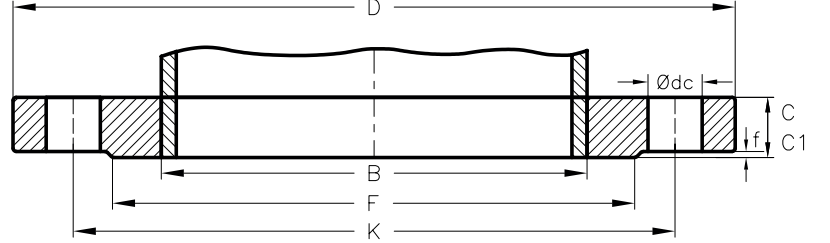
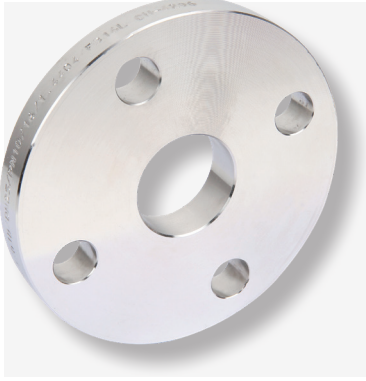


PN25 - EN 1092 -1 TYPE 01 - TSE 7005-1


BORU (PIPE)		FLANŞ (FLANGE)							CİVATA (BOLT)			AĞIRLIK (WEIGHT)
Çap Diameter	db	B	D	EN 1092 -1	TSE 7005-1	K	f	F	Delik Sayısı (Bolt Holes)	Civata Çapı (Bolt Diameter)	dc	
	ISO			C	C1							
15	...	21	95	14	16	65	2	46	4	M12	14	...
	21.3	22										
20	...	26	10	16	18	75	2	56	4	M12	14	...
	26.9	27.5										
25	...	31	115	16	18	85	2	65	4	M12	14	...
	33.7	34.5										
32	...	39	140	18	18	100	2	76	4	M16	18	...
	42.4	43.5										
40	...	45.5	150	18	18	110	2	84	4	M16	18	...
	48.3	49.5										
50	...	58.1	165	20	20	125	2	99	4	M16	18	...
	60.3	61.5										
65	76.1	77.5	185	22	22	145	2	118	8	M16	18	...
80	88.9	90.5	200	24	24	160	2	132	8	M16	18	...
100	...	109.6	235	26	24	190	2	156	8	M20	22	...
	114.3	116										
125	...	134.8	270	28	26	220	2	184	8	M24	26	...
	139.7	141.5										
150	...	161.1	300	30	28	250	2	211	8	M24	26	...
	168.3	170.5										
200	219.1	221.5	360	32	30	310	2	274	12	M24	26	...
250	...	170.2	425	35	32	370	2	330	12	M27	30	...
	273	276.5										
300	323	327.5	485	38	34	430	2	389	16	M27	30	...
350	355.6	359.5	555	42	38	490	2	448	16	M30	33	...
	...	372.2										
400	406.4	411	620	46	40	550	2	503	16	M33	36	...
	...	423.7										
450	457	462	670	50	40	600	2	548	20	M33	36	...
500	508	513.5	730	56	44	660	5	609	20	M33	36	...
600	610	616.5	845	68	46	770	5	720	20	M36	39	...
700	711	718	960	...	46	875	5	820	24	M39	42	...
800	813	819	1085	...	50	990	5	928	24	M45	48	...
900	914	920	1185	...	54	1090	5	1028	28	M45	48	...
1000	1016	1022	1320	...	58	1290	5	1140	28	M52	55/56	...
1200	1220	1225	1530	1420	5	1350	32	M52	55/56	...
1400	1420	1426	1755	1640	5	1560	36	M56	60/62	...
1600	1620	1626	1975	1860	5	1780	40	M56	60/62	...
1800	1820	1826	2195	2070	5	1985	44	M64	68/70	...
2000	2020	2026	2425	2300	5	2210	48	M64	68/70	...